



TradeRES

New Markets Design & Models for
100% Renewable Power Systems



Can an EOM enable resource adequacy in a ~100% RE power system in Netherlands?

15 February 2023

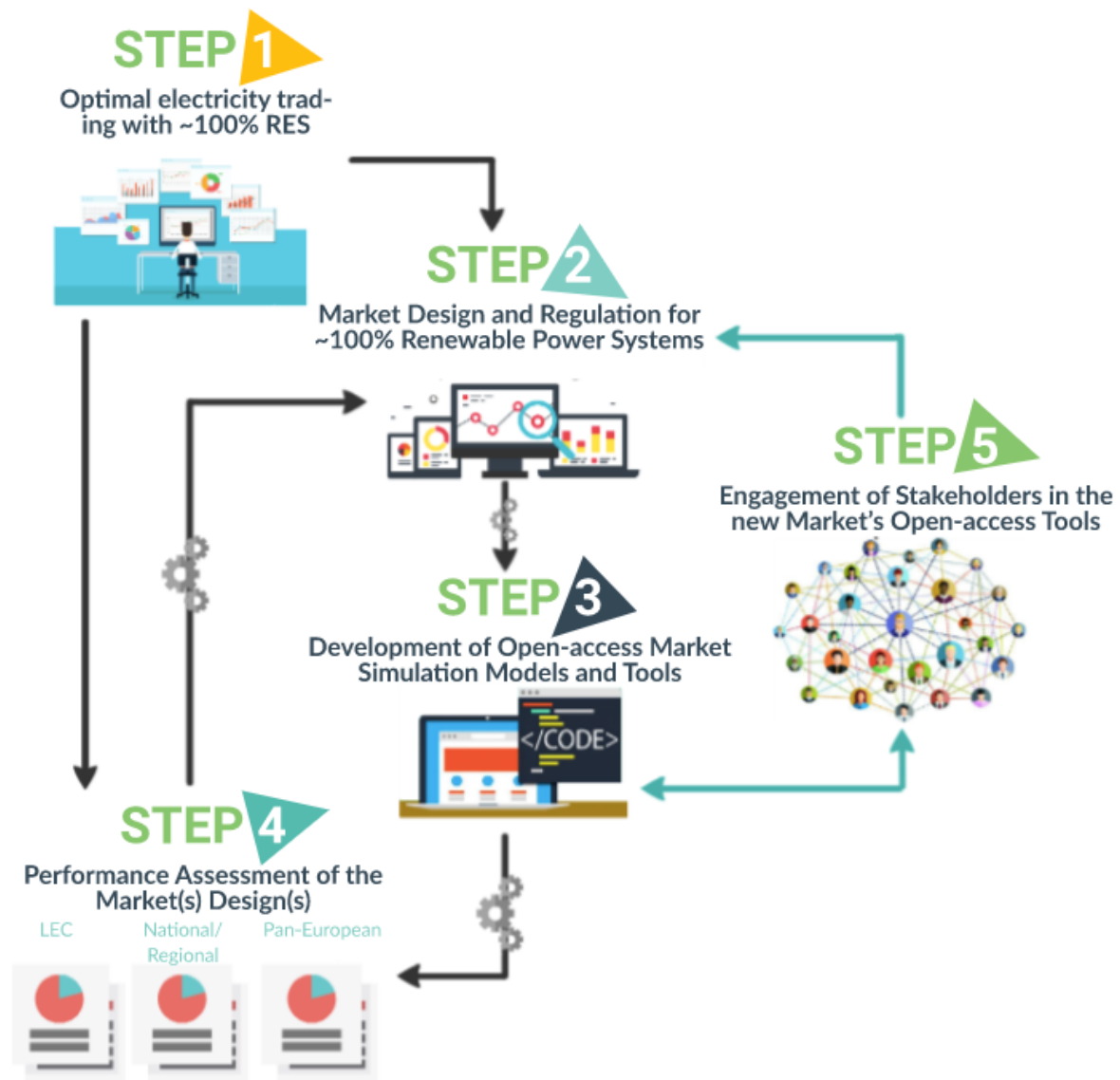


This project has received funding from the European Union's Horizon 2020 research and innovation programme under grant agreement No 864276



TradeRES

traderes.eu





Soft coupling long-term and short-term ABM

EMLabpy

- Developed by TU Delft,
- Myopic investment decisions
- Dismantling decisions (profit-based)
- Capacity mechanisms
- Inspired in EMLab, modular and in python

AMIRIS

- Developed by DLR
- Can represent flexibilities:
 - Batteries (load shifting)
 - Demand side response (load shedding)
 - Hydrogen / Electrolyzers
- Power plants as objects, runs in minutes
- Renewable support schemes

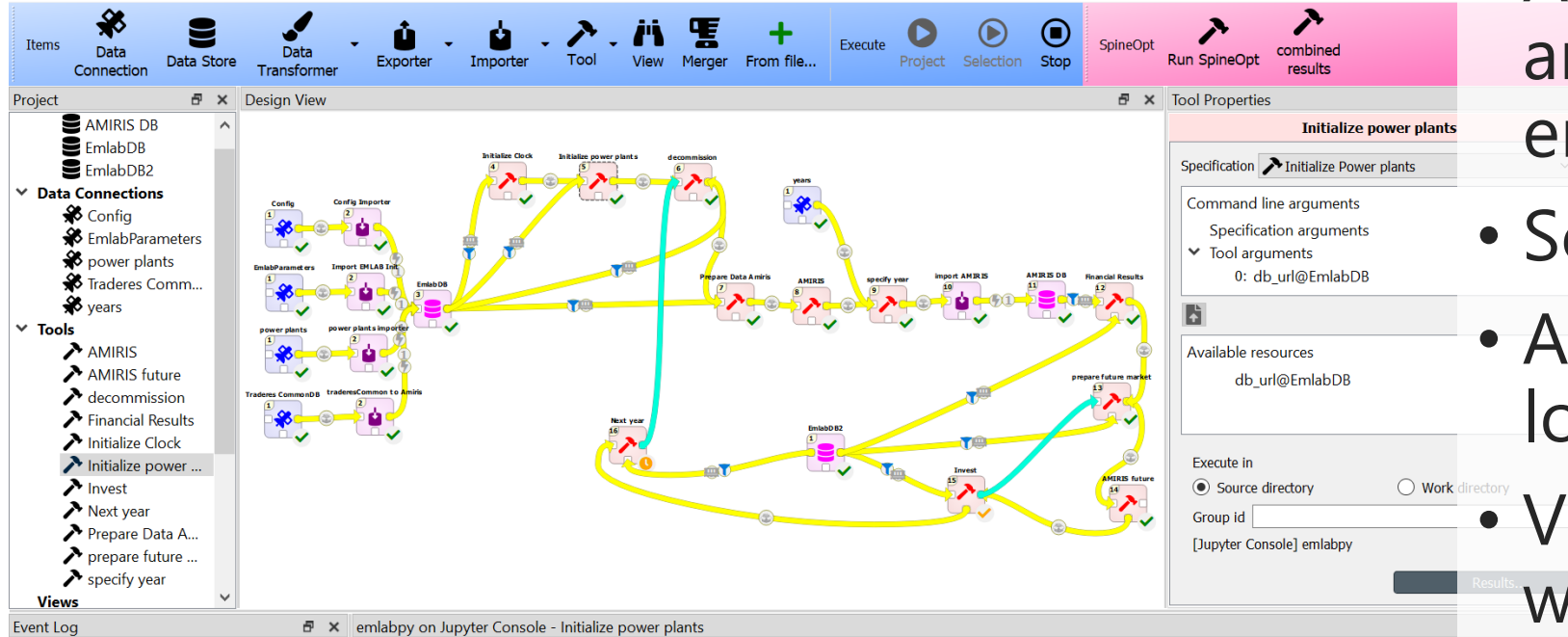
Parametrizable from external files



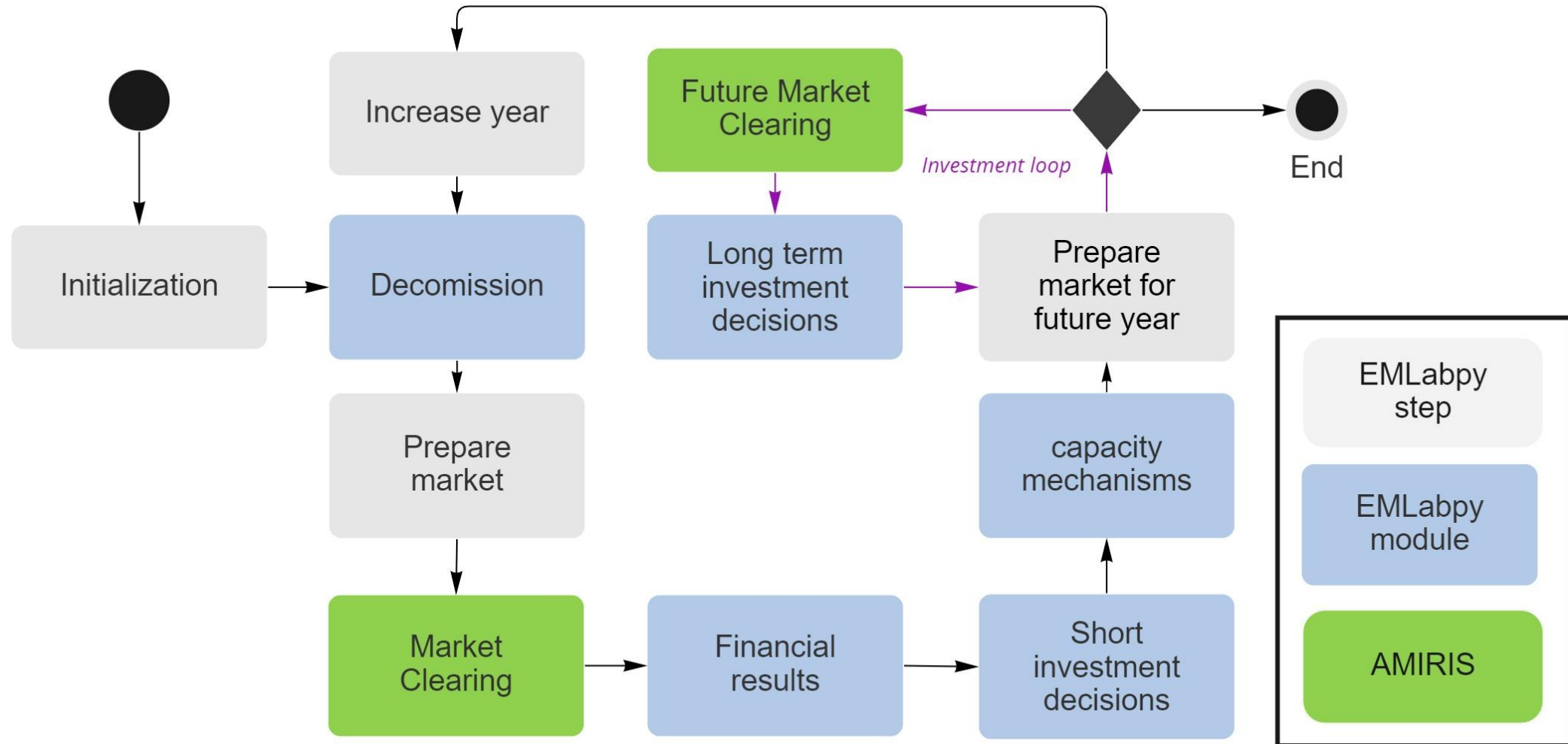
Soft coupling Amiris – Emlabpy in Spinetoolbox

toolbox-amiris-emlab [C:\toolbox-amiris-emlab] - Spine Toolbox

File Edit View Plugins Consoles Server Help

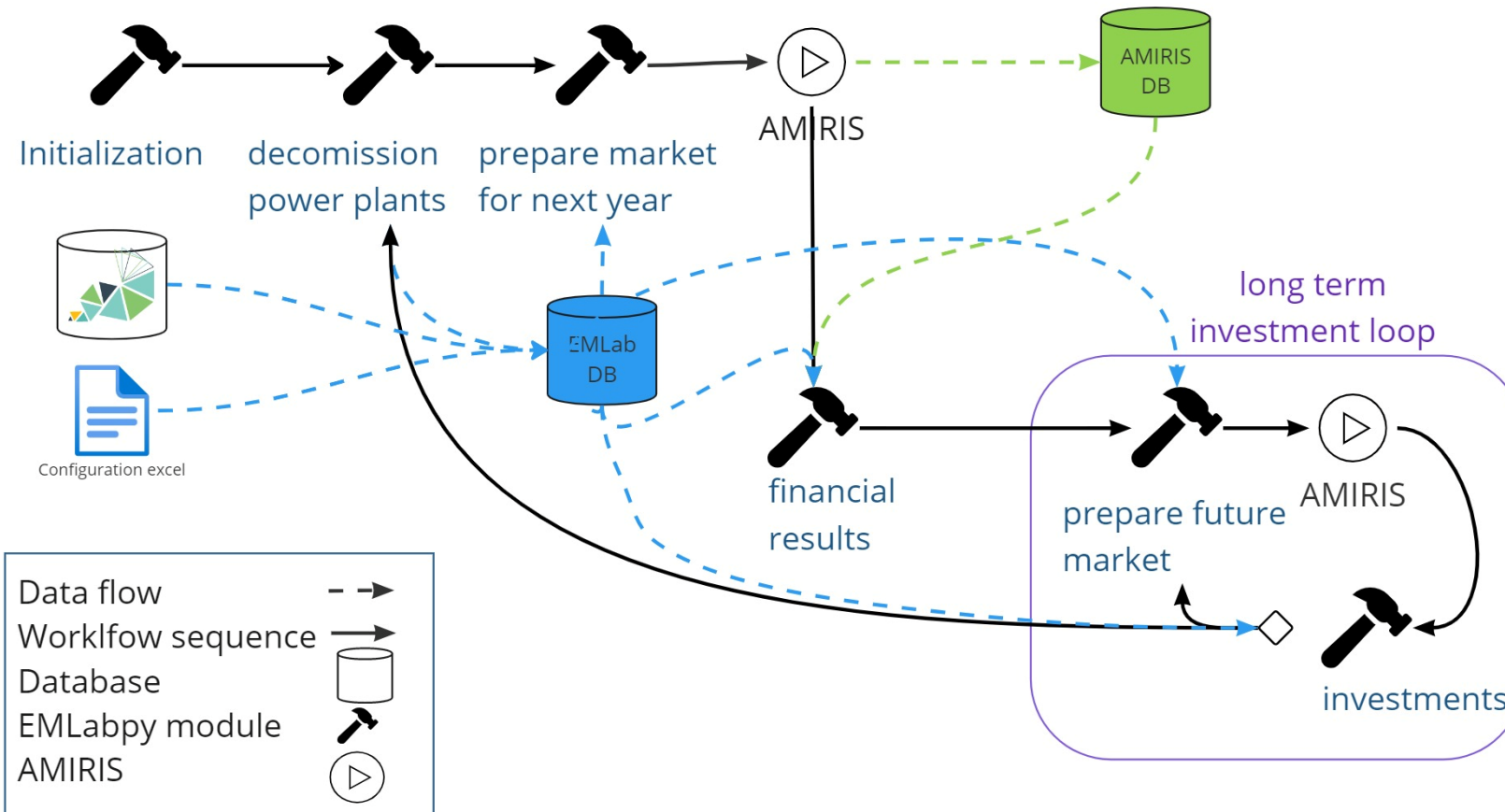


- Allow to keep data in DB and modify specific entries
- Scenario management
- Allows modeling workflow loops
- Visualization of time series within the tool



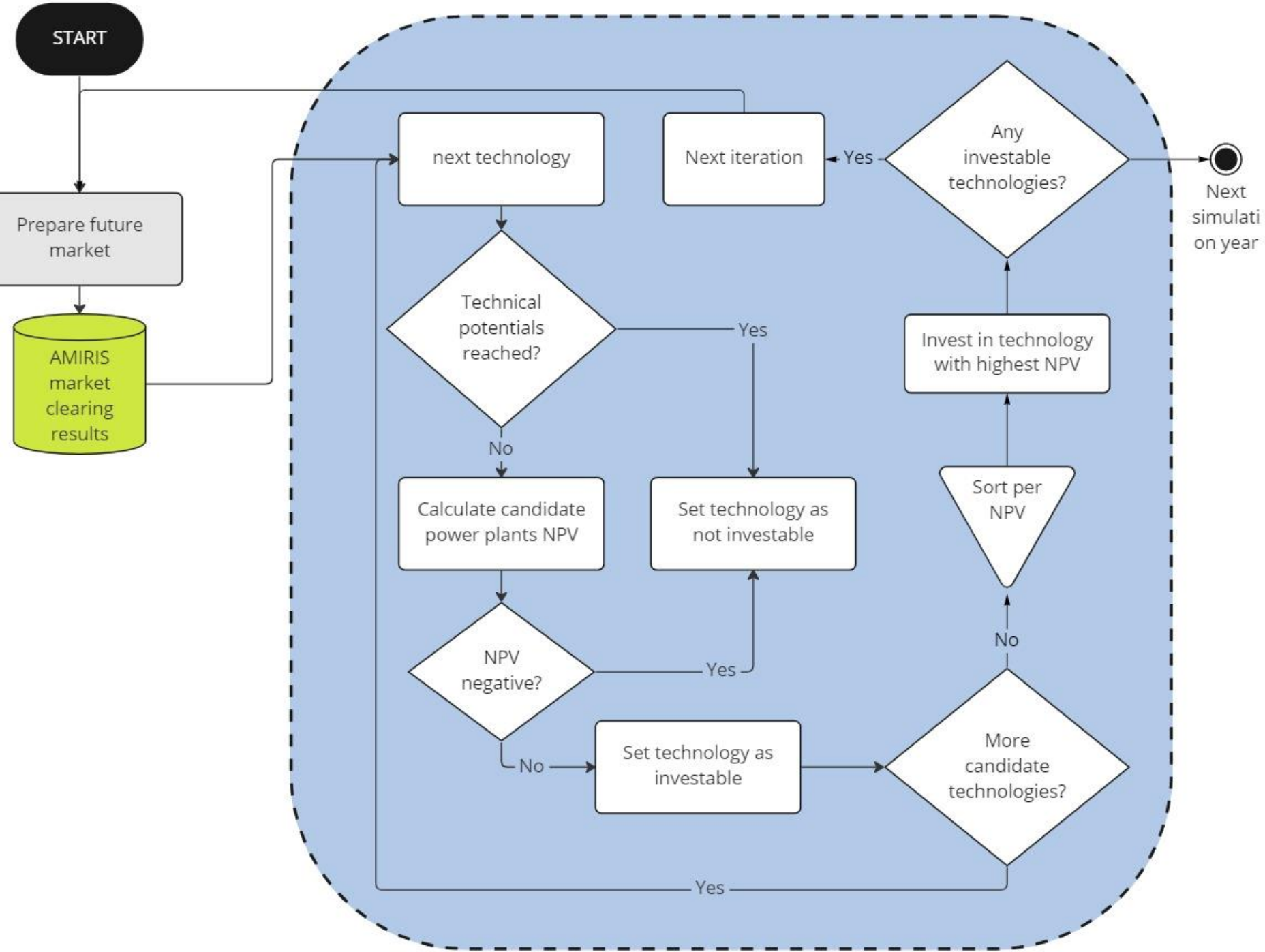


Soft coupling Amiris – Emlabpy dataflow



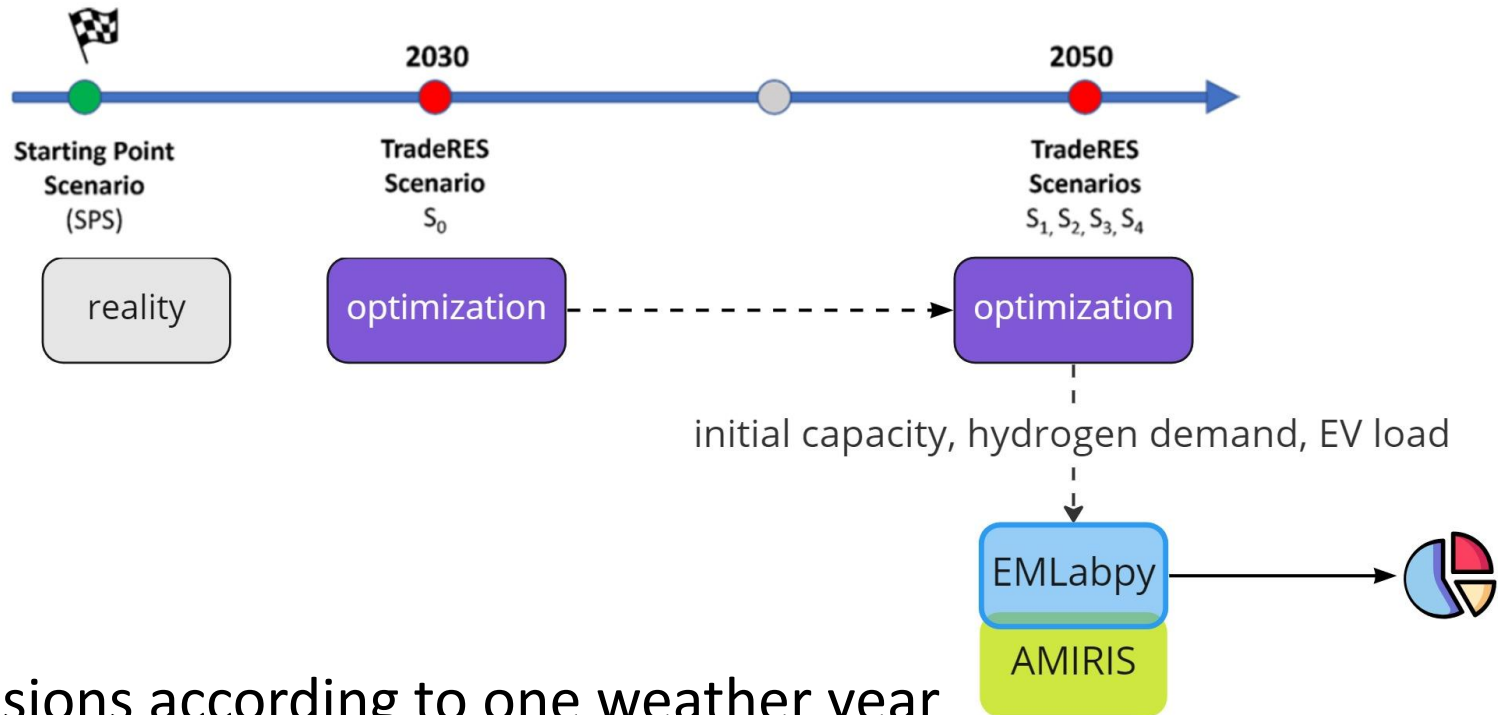


Investment





Case study: Netherlands ~100% REs



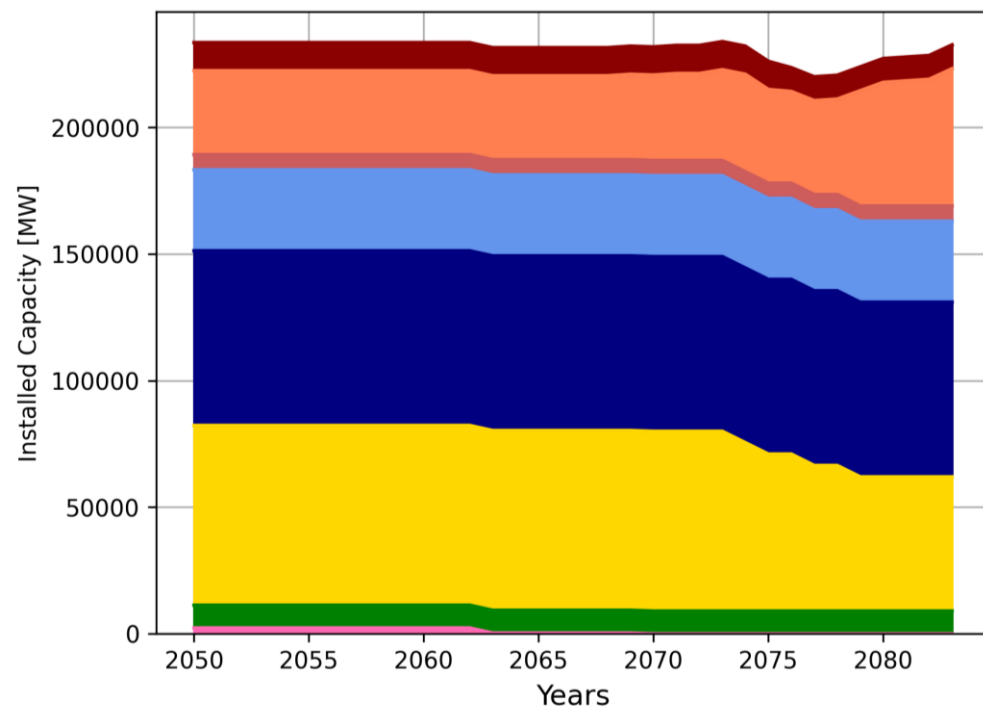
- Investors make decisions according to one weather year
- In yearly dispatch the weather profiles are random
- Fix Demand
- Fix fuel (H2) prices
- Candidate investments: RES, batteries, hydrogen



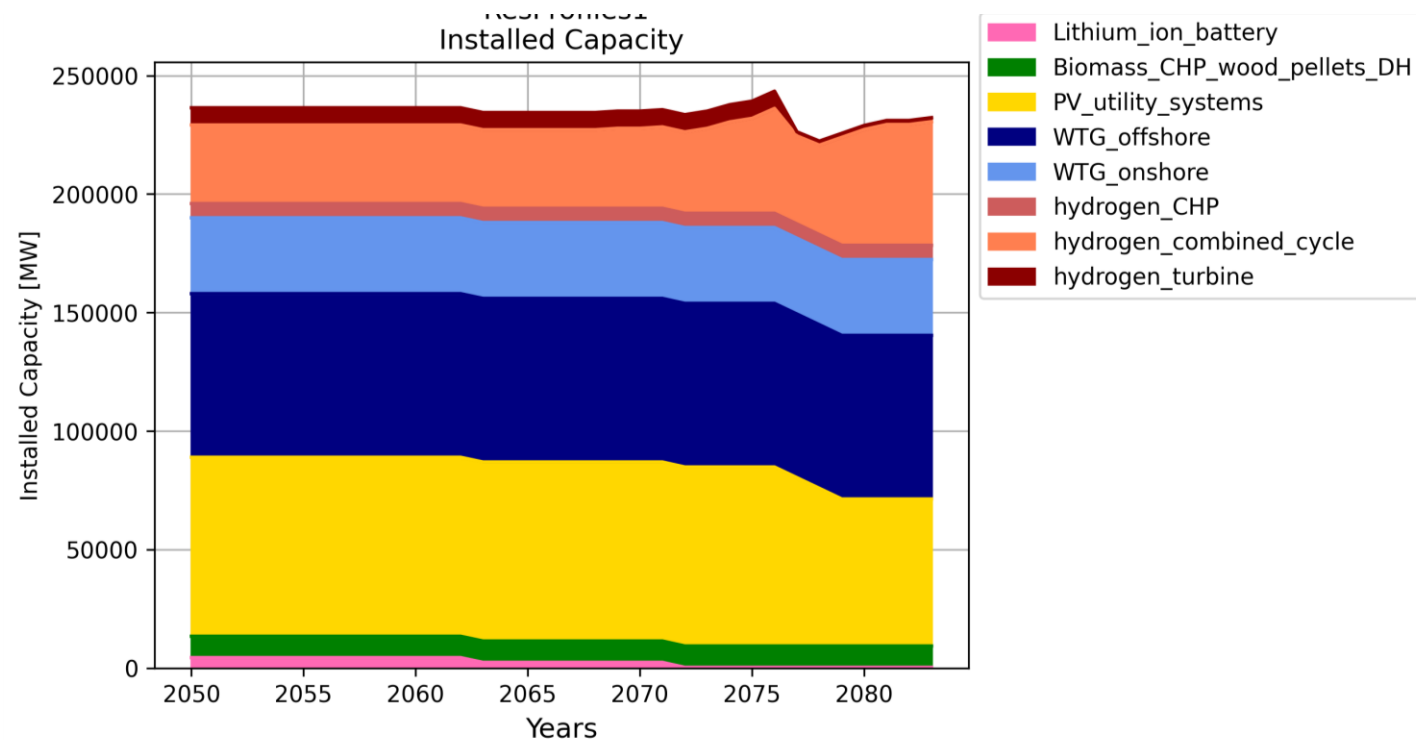
Preliminary results

Installed capacity

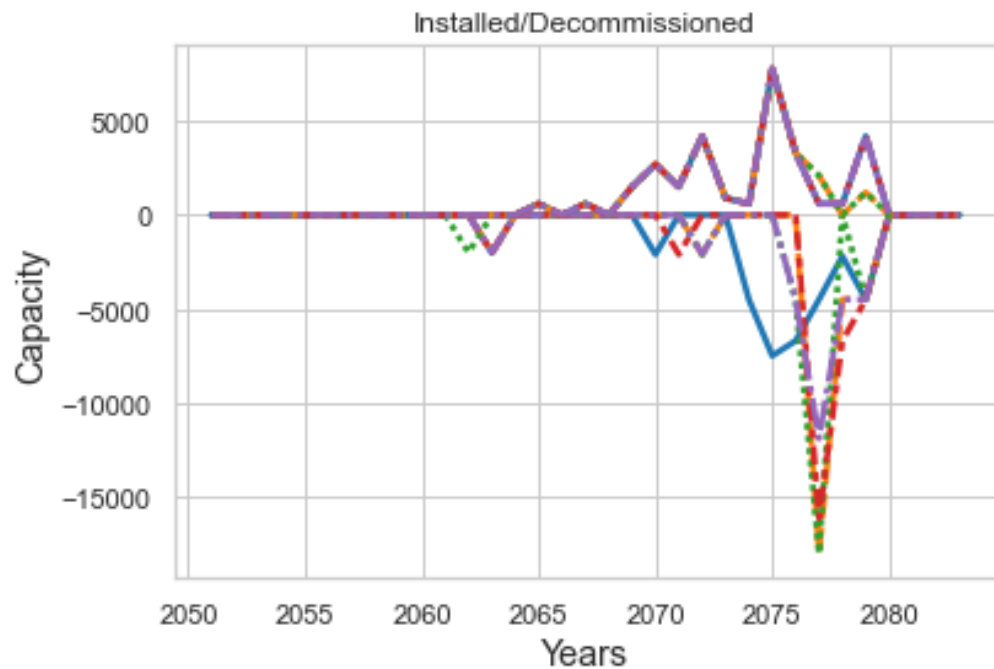
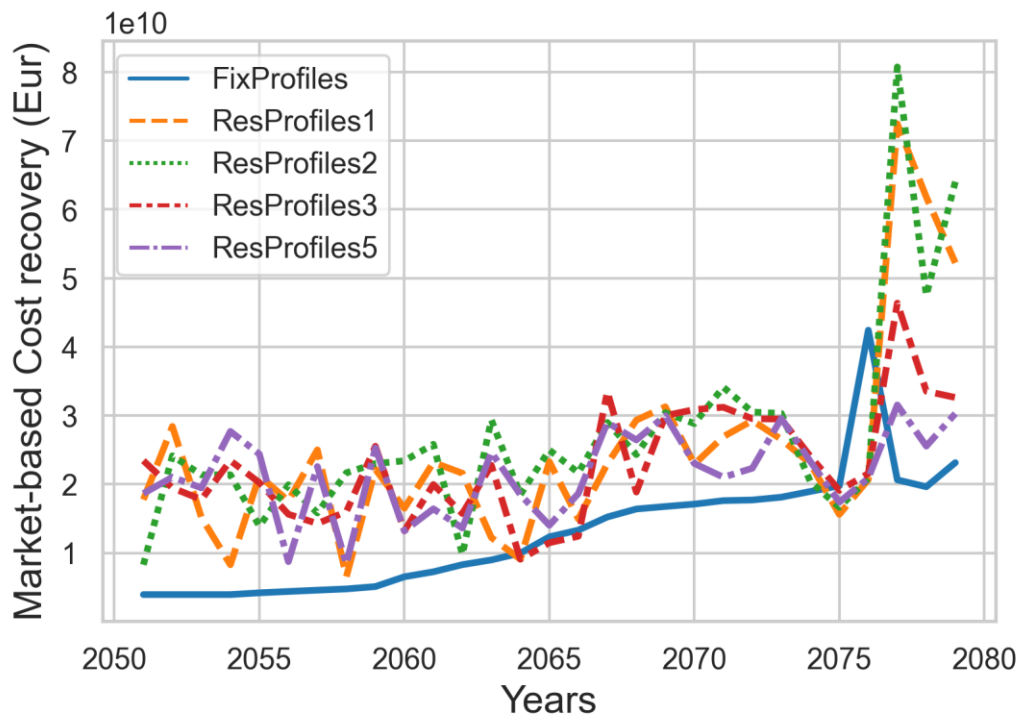
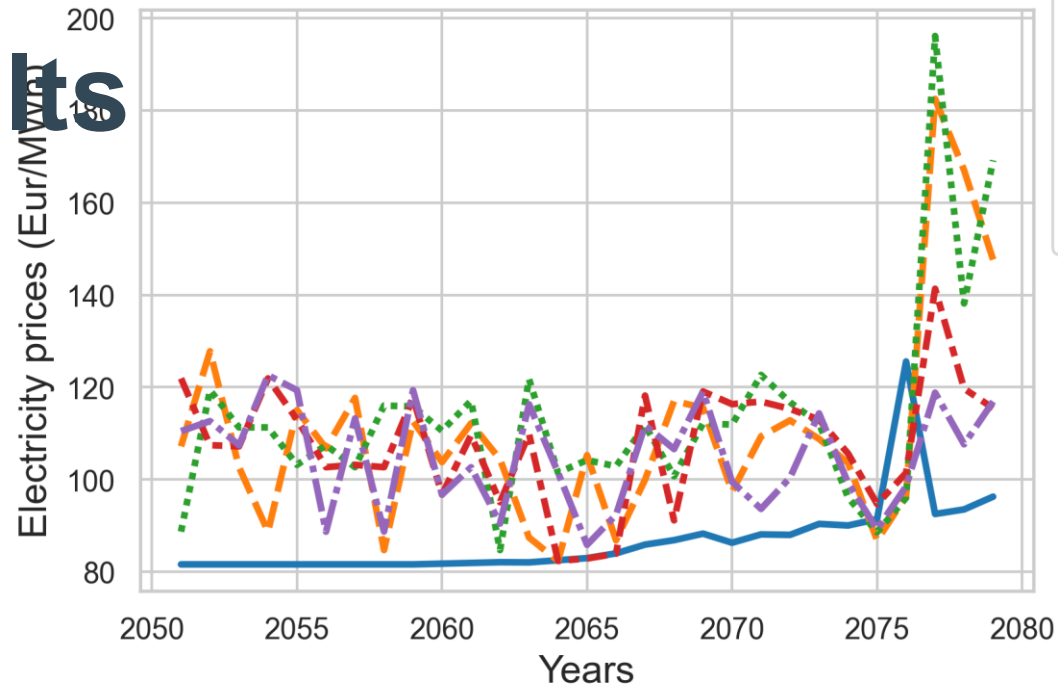
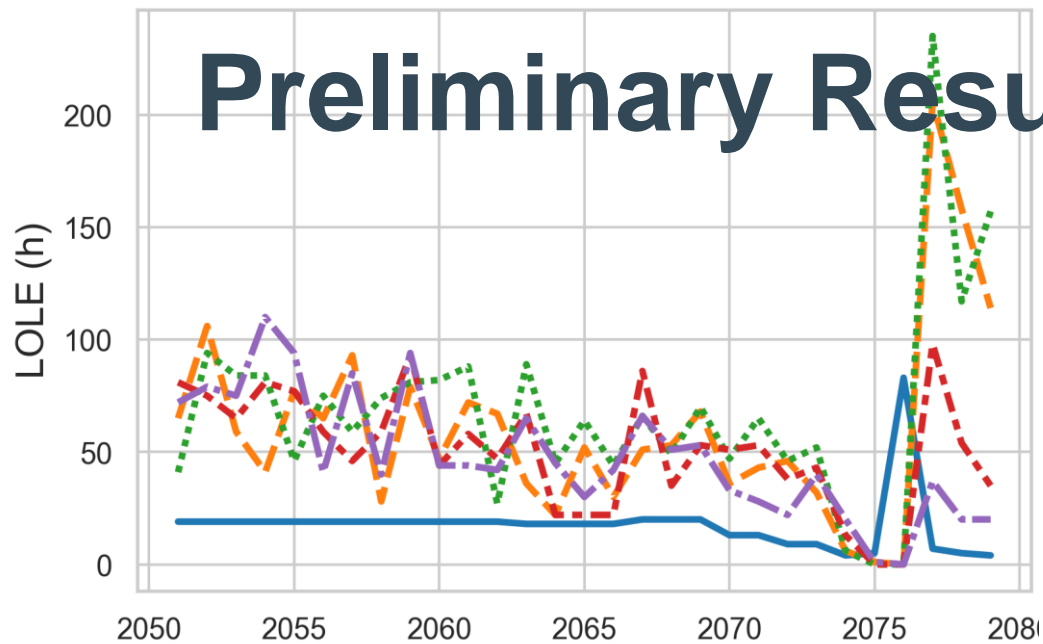
One weather year



30 weather years



Preliminary Results





Next steps

- Capacity mechanisms, incl. capacity subscription
- Transition scenario with RES support scheme and capacity mechanisms
- Add more demand-side response
- Add quick investments decisions





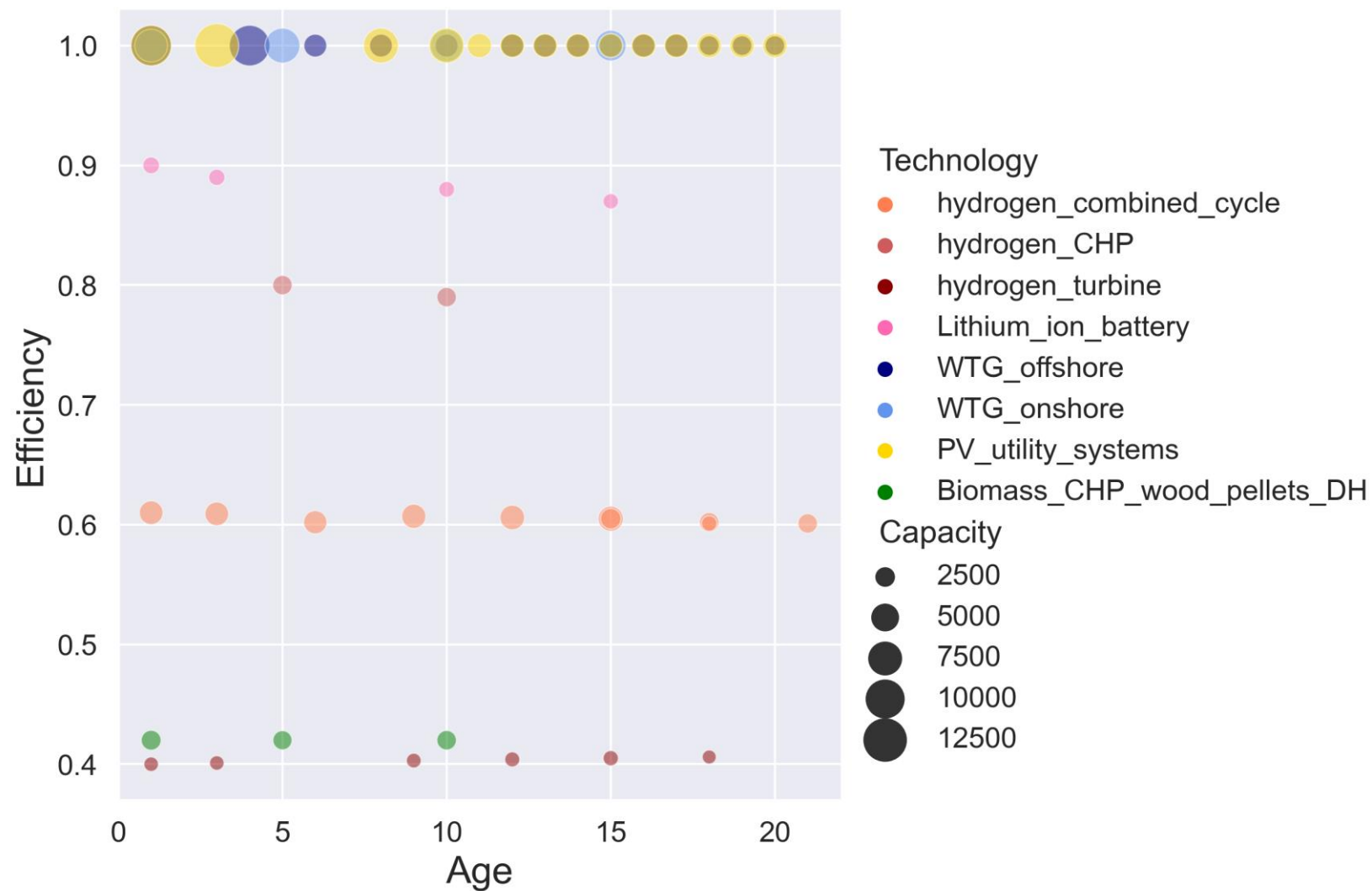
TradeRES

New Markets Design & Models for
100% Renewable Power Systems

Thank you!



Initial power plants

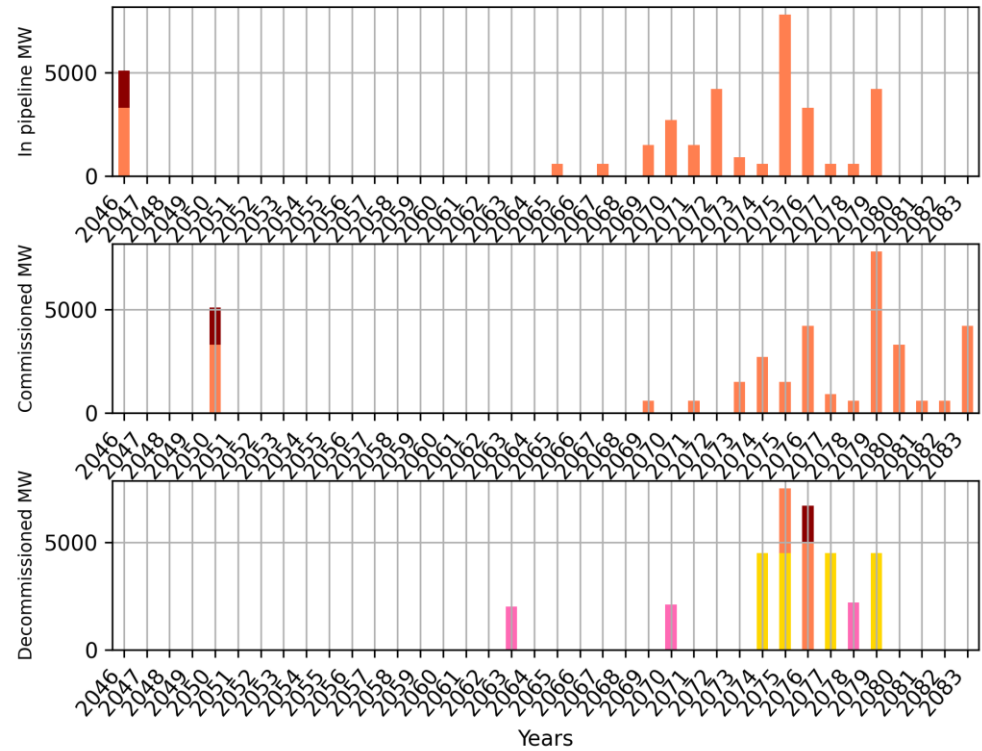




Investments/Dismantles

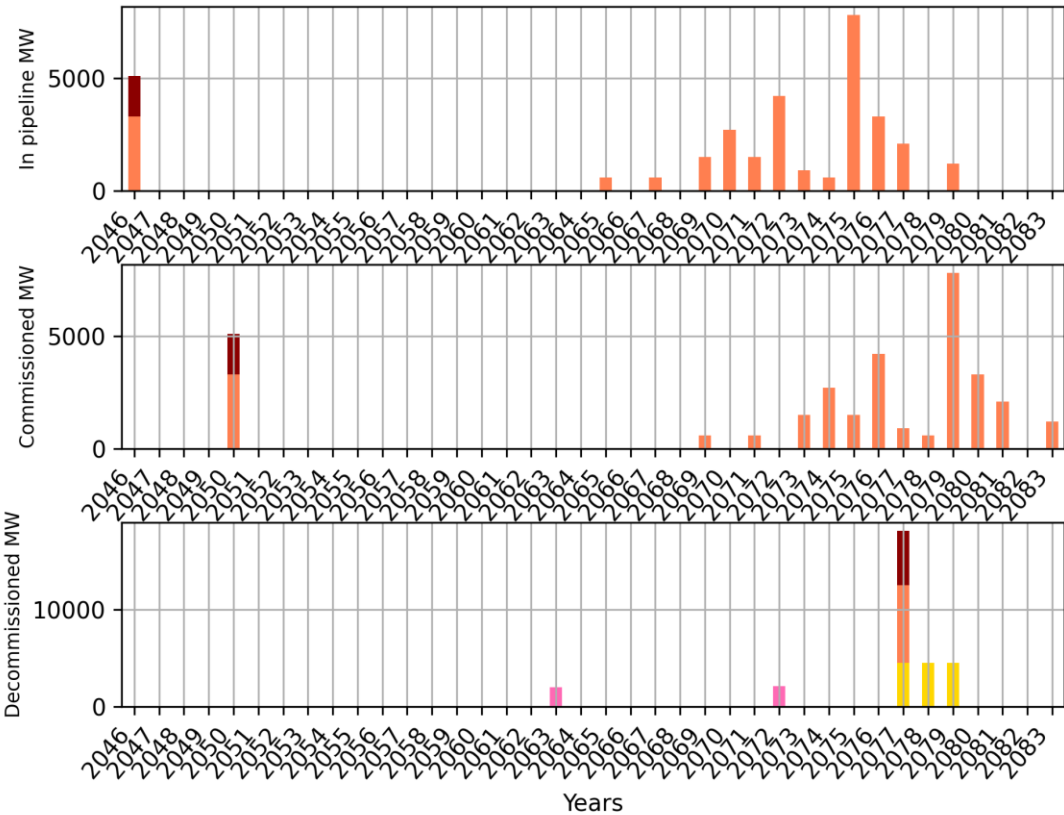
FixProfiles

Investments by decision year (up) and by commissioning year (down) Maximum 100



-ResProfiles1

Investments by decision year (up) and by commissioning year (down) Maximum 100000.0GW

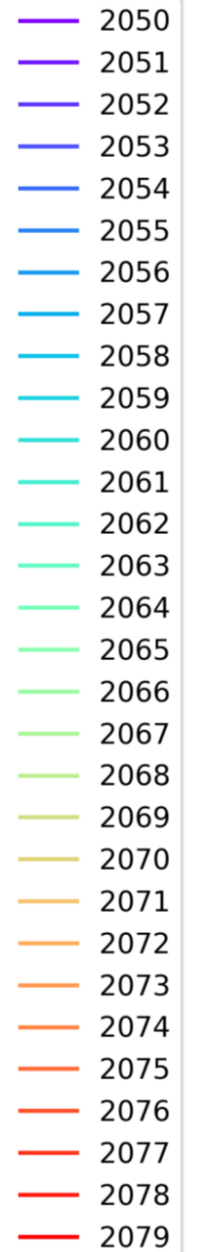
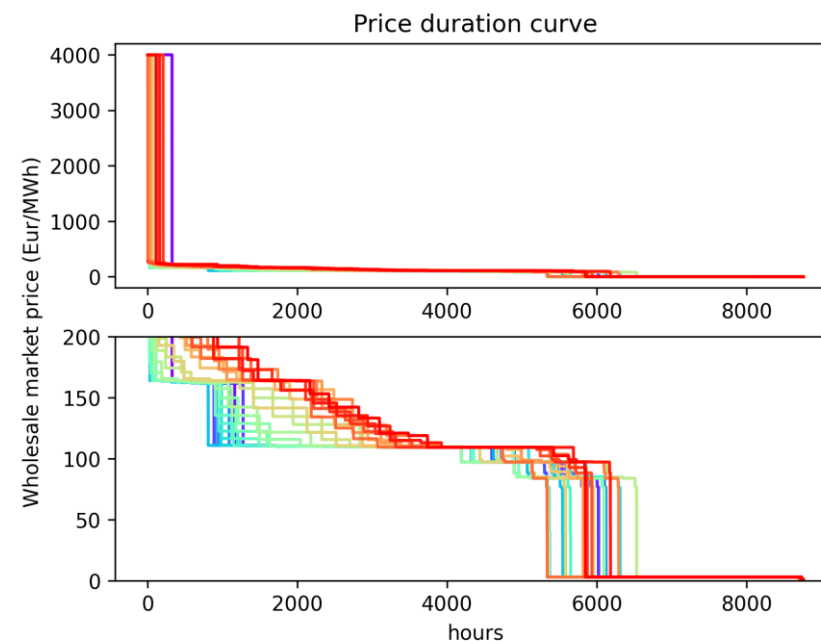
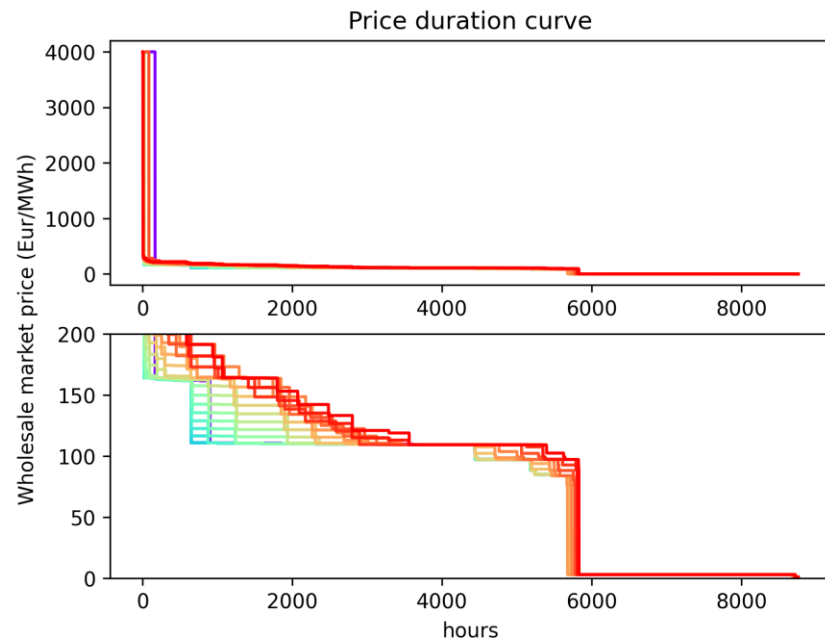




Price duration curves

- One weather year

More weather years: profiles1





Decommission

